

(Only EF) SF CB TPU/30 R18T L.blue 1200mm FG 2 row

Article code: SFPUXX1020

General information

Product group	Soliflex
Main product feature	Positive drive, Chemical resistant, Non-stick, Wear resistant

Belt construction

Material	TPU-E
Top side	R18
Bottom side	matt
Color	Light blue

Characteristics

Food Grade (FG)	yes	EU 1935/2004, EU 10/2011; FDA; No
------------------------	-----	-----------------------------------

Technical data

Pitch			39.7 mm	1.56 in.
Hardness	ISO 868		98A Shore	
Force at 1% elongation	ISO 21181		2.7 N/mm	15.42 lbs/in.
Belt thickness			3 mm	0.12 in.
Weight			4.6 kg/m ²	0.94 lbs/ft ²
Operating temperature	continuous	from / to	-10 / 70 °C	14 / 158 °F
Minimum pulley diameter	flexing		150 mm	5.91 in.
	backflexing		250 mm	9.84 in.
Manufacturing width	maximum		1200 mm	47.24 in.
	standard		1200 mm	47.24 in.

Fabrication

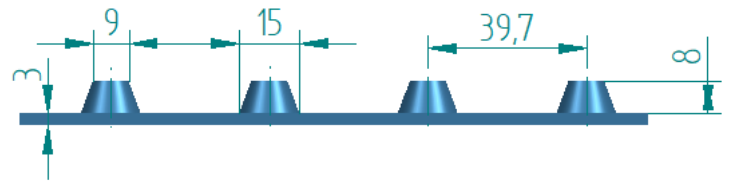
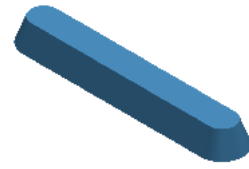
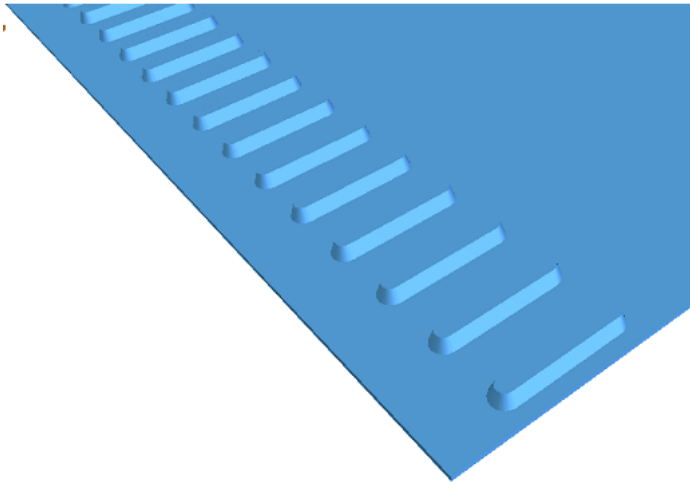
Recommended splice method	Butt weld
----------------------------------	-----------

Additional information

This sheet contains typical values, which apply to a temperature of approx. 20 °C (68 °F), unless otherwise stated, individual data may differ.

Keep the belt tension to a practical working minimum for maximum belt and machine life.

Store loose and wrapped in plastic. The allowable product temperature may vary.



Because of continuous development, the presented data is subject to alteration. This data replaces that included in previous publications. Ammeraal Beltech excludes any liability for the incorrect use of the above stated information. Subject to the general terms and conditions of sale and delivery, as applied by its operating companies, are all activities performed and services rendered by Ammeraal Beltech.