

# Soliflex CB TPU/30 M1T I. blue 36in FG 2 rows

Article code: SFPU000935

## General information

<b>Product group</b>	Soliflex
<b>Main product feature</b>	Positive drive, Chemical resistant, Non-stick, Wear resistant

## Belt construction

<b>Material</b>	TPU
<b>Top side</b>	M1 Fine matt finish, M1 Fine matt finish
<b>Bottom side</b>	matt
<b>Color</b>	Light blue

## Characteristics

<b>Food Grade (FG)</b>	yes	EU 1935/2004, EU 10/2011; FDA; No
------------------------	-----	-----------------------------------

## Technical data

<b>Pitch</b>			39.7 mm	1.56 in.
<b>Hardness</b>	ISO 868		53D Shore	
<b>Force at 1% elongation</b>	ISO 21181		3 N/mm	17.13 lbs/in.
<b>Belt thickness</b>			3 mm	0.12 in.
<b>Weight</b>			4.6 kg/m <sup>2</sup>	0.94 lbs/ft <sup>2</sup>
<b>Operating temperature</b>	continuous	from / to	-5 / 70 °C	23 / 158 °F
<b>Minimum pulley diameter</b>	flexing		124.5 mm	4.9 in.
	backflexing		250 mm	9.84 in.
<b>Manufacturing width</b>	maximum		914 mm	35.98 in.
	standard		914 mm	35.98 in.

## Fabrication

<b>Recommended splice method</b>	Butt weld
----------------------------------	-----------

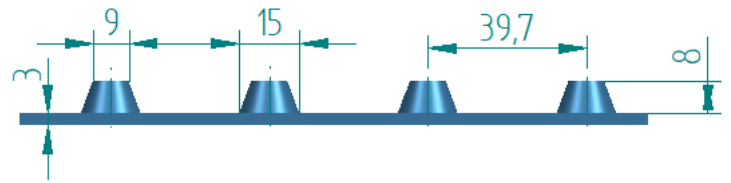
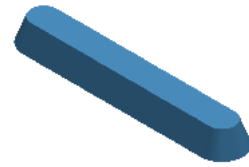
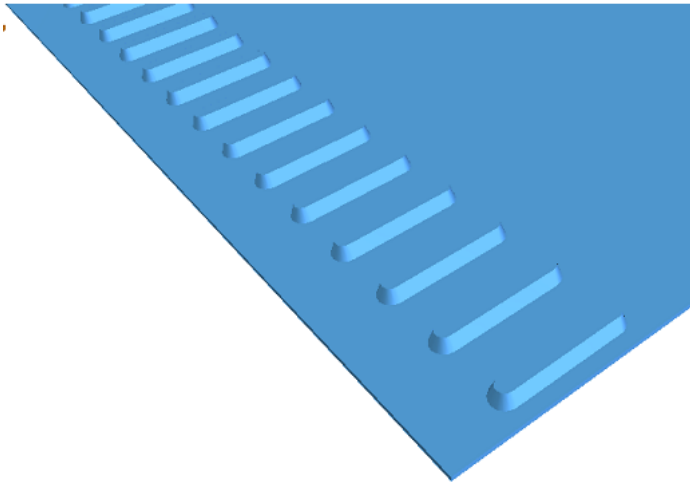
## Additional information

This sheet contains typical values, which apply to a temperature of approx. 20 °C (68 °F), unless otherwise stated, individual data may differ.

Keep the belt tension to a practical working minimum for maximum belt and machine life.

Store loose and wrapped in plastic. The allowable product temperature may vary.





Because of continuous development, the presented data is subject to alteration. This data replaces that included in previous publications. Ammeraal Beltech excludes any liability for the incorrect use of the above stated information. Subject to the general terms and conditions of sale and delivery, as applied by its operating companies, are all activities performed and services rendered by Ammeraal Beltech.