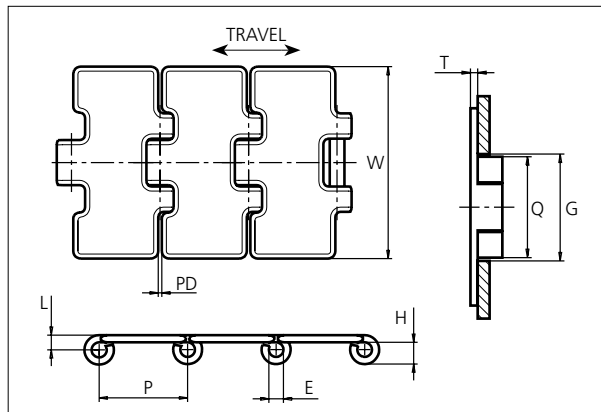
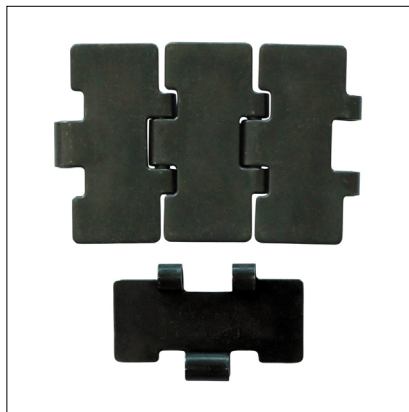




Slat Top Steel Chain

Series **uni 810** Type **Single Hinge**



Slat Top Steel Chain
 Straight running chain
 Pitch: 38.1 mm (1.50 in)
 Backflex radius:
 150.0 mm (5.91 in)
 Standard shipping lengths:
 coils of 80 links
 = 3.048 m (10.0 ft)

STANDARD

E		G		H		L		P		Q		T		PD	
mm	in	mm	in	mm	in	mm	in	mm	in	mm	in	mm	in	mm	in
6.4	0.25	44.5	1.75	9.9	0.39	6.5	0.26	38.1	1.50	42.5	1.67	3.0	0.12	1.6	0.06

STRAIGHT RUNNING

	Width (W)		Weight		Permissible tensile strength N/lbf	Chain material	Pin material*	Surface	
	mm	in	kg/m	lb/ft				Roughness	Hardness
K225	57.2	2.25	2.2	1.48	4000/899	S1045 (Heat-treated Carbon Steel)	S1045 (Case-hardened Carbon Steel)	> 0.5 µm	43 HRC
K250	63.5	2.50	2.3	1.55					
K325	82.6	3.25	2.7	1.78					
K450	114.3	4.50	3.3	2.22					
K600	152.4	6.00	4.2	2.82					
K750	190.5	7.50	5.1	3.43					

PITCH 38.1 MM/1.50 IN

* Chains with special hardened pin (HP) for additional wear resistance and higher corrosion strength are made to order.

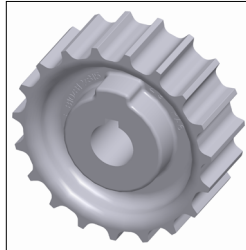
Sprocket

No. of teeth	Pitch diameter		Overall diameter		Min. ø bore		Max. ø bore		Hub diameter		Dimension A		Dimension B		Molded PA6 LG	Molded Cast Iron	Machined PA6
	mm	in	mm	in	mm	in	mm	in	mm	in	mm	in	mm	in			
Z13	82	3.22	79	3.11	20	0.8	40	1.6	0	0	29.8	1.17	48.1	1.89		x	
Z19	117.3	4.62	117	4.61	20	0.8	40	1.6	58	2.28	58.7	2.31	64.5	2.54	x		
Z21	129.2	5.09	130	5.12	20	0.8	40	1.6	58	2.28	65	2.56	70.5	2.78	x		
Z23	141.2	5.56	142	5.59	20	0.8	40	1.6	58	2.28	71.2	2.80	76.5	3.01	x		
Z25	153.2	6.03	155	6.10	20	0.8	40	1.6	58	2.28	77.4	3.05	82.5	3.25	x		
Z27	165.2	6.50	167	6.57	20	0.8	70	2.8	0	0	83.6	3.29	88.5	3.48		x	x
Z29	177.2	6.98	179	7.05	20	0.8	70	2.8	0	0	89.8	3.54	94.6	3.72		x	x
Z31	189.3	7.45	192	7.56	20	0.8	70	2.8	0	0	95.9	3.78	100.6	3.96		x	x

Two part sprocket

No. of teeth	Pitch diameter		Overall diameter		Min. ø bore		Max. ø bore		Hub diameter		Dimension A		Dimension B		Molded PA6 LG	Molded Cast Iron	Machined PA6
	mm	in	mm	in	mm	in	mm	in	mm	in	mm	in	mm	in			
Z19	117.3	4.62	117.0	4.61	20.0	0.79	40.0	1.57	58.0	2.28	58.7	2.31	64.5	2.54	x		
Z21	129.2	5.09	130.0	5.12	20.0	0.79	40.0	1.57	58.0	2.28	65.0	2.56	70.5	2.78	x		
Z23	141.2	5.56	142.0	5.59	20.0	0.79	40.0	1.57	58.0	2.28	71.2	2.80	76.5	3.01	x		
Z25	153.2	6.03	155.0	6.10	20.0	0.79	40.0	1.57	58.0	2.28	77.4	3.05	82.5	3.25	x		

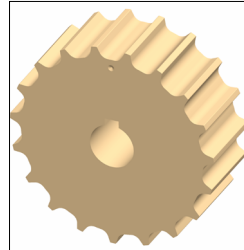
Molded sprocket



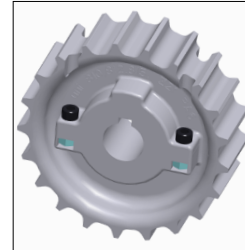
Cast iron sprocket



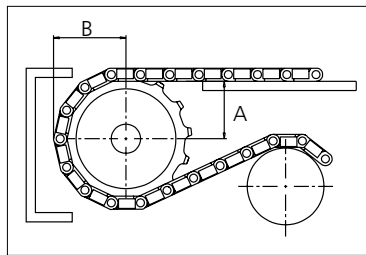
Machined sprocket



Two part sprocket



Non standard material and color:
See uni Material and Color Overview.



Please ensure that sufficient size shaft and keyway are chosen for corresponding load.

Other sprocket sizes are available upon request

Width of tooth: 31.8 mm/1.25 in

Width of sprocket: 42.3 mm/1.67 in

Width of cast iron sprocket : 41.3 mm/1.63 in

uni Retainer Rings: See uni Retainer Ring data sheet:

<https://app.eptool.online/downloads?query=retainer+ring>



uni 810 Single Hinge / 04022025



The local partner of choice for sustainable conveyor belting solutions – around the globe.

<http://eptool.online>

Member of Ammega Group.



Scan the QR code and find your local contact

Ammeraal Beltech Modular
Hjulgagervej 21
DK-7100 Vejle
T +45 7572 3100

<http://eptool.online>

This information is subject to alteration due to continuous development. Ammeraal Beltech will not be held liable for the incorrect use of the above stated information. This information replaces previous information. All activities performed and services rendered by Ammeraal Beltech are subject to general terms and conditions of sale and delivery, as applied by its operating companies.