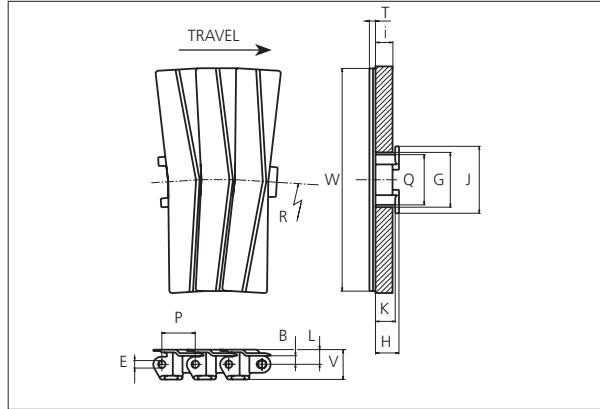




# Special Plastic Chain

Series **uni 882** Type **Tab SC**



**Special Plastic Chain**

Side flexing chain  
 Pitch: 38.1 mm (1.50 in)  
 Backflex radius:  
 125.0 mm (4.90 in)  
 Permissible tensile strength:  
 POM material:  
 4000 N (899 lbf)  
 Standard shipping lengths:  
 boxes of 80 links  
 = 3.048 m (10.0 ft)

STANDARD

B		E		G		H		J		K		i		L		P		Q		T		V	
mm	in	mm	in	mm	in	mm	in	mm	in	mm	in	mm	in	mm	in	mm	in	mm	in	mm	in	mm	in
9.7	0.38	8.7	0.34	59.5	2.34	21.9	0.86	76.2	3.00	17.5	0.69	15.0	0.59	16.7	0.66	38.1	1.50	57.2	2.25	7.0	0.28	29.0	1.14

All dimensions are for chains in POM material.

	Width (W)		Material & color	Pin material	Weight		min. radius R	
	mm	in			kg/m	lb/ft	mm	in
<b>K450</b>	114.3	4.50	POM-LF <b>BR</b>	<b>SS304</b>	2.2	1.48	610	24.02
<b>K750</b>	190.5	7.50	POM-LF <b>BR</b>	<b>SS304</b>	3.0	2.01	610	24.02
<b>K1000</b>	254.0	10.00	POM-LF <b>BR</b>	<b>SS304</b>	3.4	2.28	610	24.02

Non standard material and color: See uni Material and Color Overview.  
 Non standard pin material: See uni Material and Color Overview.

SIDE FLEXING

PITCH 38.1 MM/1.50 IN



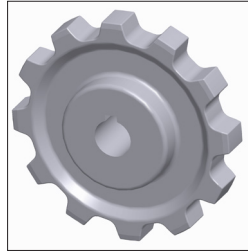
## Sprocket

No of teeth	Pitch diameter		Overall-diameter		Min. ø bore		Max. ø bore		Hub-diameter		A-dimension		B-dimension		Molded PA6 LG	Molded Cast Iron	Machined PA6 LG
	mm	in	mm	in	mm	in	mm	in	mm	in	mm	in	mm	in			
Z9	111.4	4.39	112.7	4.44	20.0	0.79	45.0	1.77	60.0	2.36	62.0	2.44	73.3	2.89	✓	✓	
Z10	123.3	4.85	125.0	4.92	20.0	0.79	45.0	1.77	65.0	2.56	68.3	2.69	79.3	3.12	✓	✓	
Z11	135.2	5.32	137.4	5.41	20.0	0.79	50.0	1.97	73.5	2.89	74.6	2.94	85.2	3.35	✓	✓	
Z12	147.2	5.80	150.6	5.93	20.0	0.79	50.0	1.97	73.5	2.89	80.8	3.18	91.2	3.59	✓	✓	
Z15	183.3	7.22	186.9	7.36	20.0	0.79	50.0	1.97	120.0	4.72	99.3	3.91	109.1	4.30		✓	✓

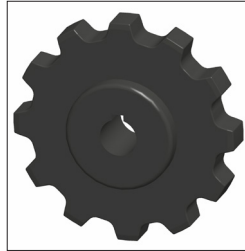
## Two part sprocket

No of teeth	Pitch diameter		Overall-diameter		Min. ø bore		Max. ø bore		Hub-diameter		A-dimension		B-dimension		Molded PA6 LG
	mm	in	mm	in	mm	in	mm	in	mm	in	mm	in	mm	in	
Z9	111.4	4.39	112.7	4.31	20.0	0.79	45.0	1.77	60.0	2.36	62.0	2.44	73.3	2.89	✓
Z10	123.3	4.85	125.0	4.81	20.0	0.79	45.0	1.77	65.0	2.56	68.3	2.69	79.3	3.12	✓
Z11	135.2	5.32	137.4	5.30	20.0	0.79	50.0	1.97	73.5	2.89	74.6	2.94	85.2	3.35	✓
Z12	147.2	5.80	150.6	5.79	20.0	0.79	50.0	1.97	73.5	2.89	80.8	3.18	91.2	3.59	✓

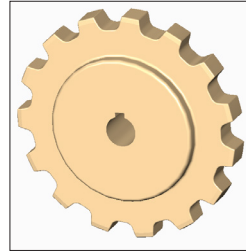
### Molded sprocket



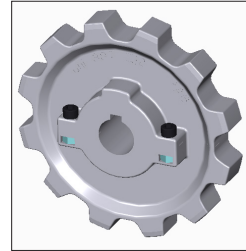
### Cast iron sprocket



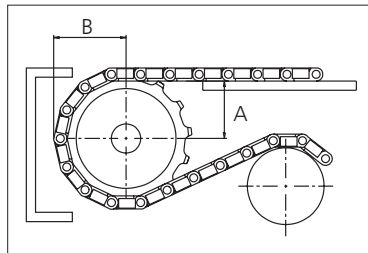
### Machined sprocket



### Molded two part sprocket



Non standard material and color:  
See uni Material and Color Overview.



Please ensure that sufficient size shaft and keyway are chosen for corresponding load.

Other sprocket sizes are available upon request  
Width of tooth: 22.20 mm/0.87 in  
Width of sprocket: 42.3 mm/1.70 in  
Width of cast iron sprocket: 41.3 mm/1.63 in  
uni Retainer Rings: See uni Retainer Ring data sheet



The local partner of choice for sustainable conveyor belting solutions – around the globe.

<http://eptool.online>

Member of Ammega Group.



Scan the QR code and find your local contact

**Ammeraal Beltech Modular**  
Hjulgagervej 21  
DK-7100 Vejle  
T +45 7572 3100

<http://eptool.online>

This information is subject to alteration due to continuous development. Ammeraal Beltech will not be held liable for the incorrect use of the above stated information. This information replaces previous information. All activities performed and services rendered by Ammeraal Beltech are subject to general terms and conditions of sale and delivery, as applied by its operating companies.