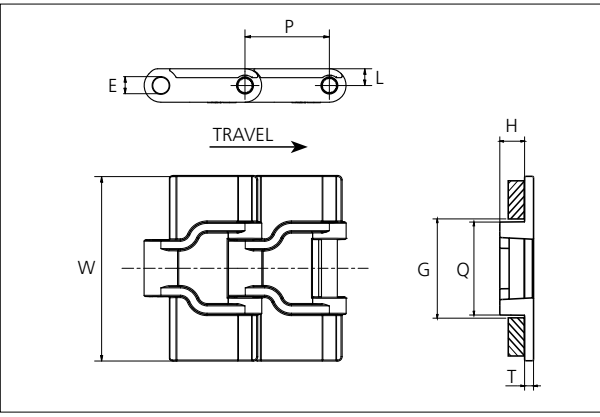
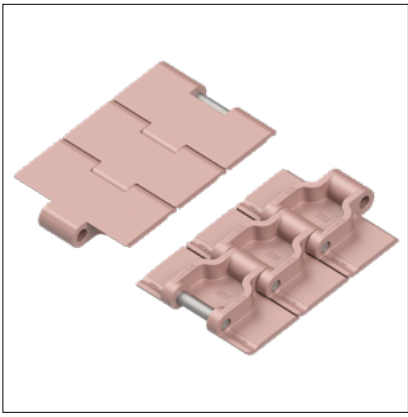




Slat Top Plastic Chain

Series **uni 828** Type -



Slat Top Plastic Chain
 Straight running chain
 Pitch: 38.1 mm (1.50 in)
 Backflex radius:
 40.0 mm (1.57 in)
 Permissible tensile strength:
 POM material:
 2150 N (483 lbf)

 Standard shipping lengths:
 boxes of 80 links
 = 3.048 m (10.0 ft)

STANDARD

E		G		H		L		P		Q		T	
mm	in	mm	in	mm	in	mm	in	mm	in	mm	in	mm	in
7.1	0.28	45.0	1.77	11.0	0.43	7.5	0.30	38.1	1.50	42.0	1.65	4.0	0.16

All dimensions are for chains in POM material.

	Width (W)		Material & color	Pin material	Weight	
	mm	in			kg/m	lb/ft
K325	82.6	3.25	POM-DK DG DRX LB POM-LF BR	SS304	1.0	0.67
K330	83.6	3.29	POM-DK DG DRX LB POM-LF BR	SS304	1.0	0.68

Non standard material and color: See uni Material and Color Overview.
 Non standard pin material: See uni Material and Color Overview.

SIDE FLEXING

PITCH 38.1 MM/1.50 IN



Sprocket

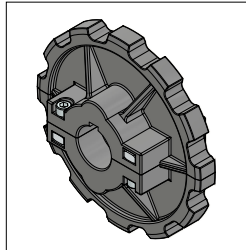
No of teeth	Pitch diameter		Overall-diameter		Min. ø bore		Max. ø bore		Hub-diameter		Dimension A		Dimension B		Machined PA6
	mm	in	mm	in	mm	in	mm	in	mm	in	mm	in	mm	in	
Z9	111.4	4.39	108.5	4.27	25.0	0.98	40.0	1.60	68.5	2.70	60.7	2.39	63.2	2.49	✓
Z10	123.3	4.85	120.2	4.73	25.0	0.98	40.0	1.60	80.5	3.17	66.65	2.62	69.2	2.72	✓
Z11	135.2	5.32	134.0	5.27	25.0	0.98	40.0	1.60	94.0	3.70	72.6	2.86	75.1	2.96	✓
Z12	147.2	5.80	147.2	5.80	25.0	0.98	40.0	1.60	107.2	4.22	78.6	3.09	81.1	3.19	✓

Two part sprocket

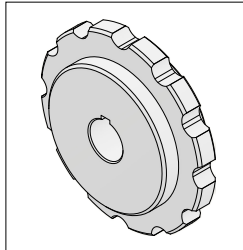
No of teeth	Pitch diameter		Overall-diameter		Min. ø bore		Max. ø bore		Hub-diameter		Dimension A		Dimension B		Molded PA6 LG	Machined PA6
	mm	in	mm	in	mm	in	mm	in	mm	in	mm	in	mm	in		
Z9	111.4	4.39	108.5	4.27	25.0	0.98	40.0	1.60	68.5	2.70	60.7	2.39	63.2	2.49		✓
Z10	123.3	4.85	120.2	4.73	25.0	0.98	40.0	1.60	80.5	3.17	66.65	2.62	69.2	2.72		✓
Z11	135.2	5.32	134.0	5.27	25.0	0.98	40.0	1.60	94.0	3.70	72.6	2.86	75.1	2.96		✓
Z12	147.2	5.80	147.2	5.80	25.0	0.98	40.0	1.60	107.2	4.22	78.6	3.09	81.1	3.19	✓	✓

Non-standard material and color: See uni Material and Color Overview.

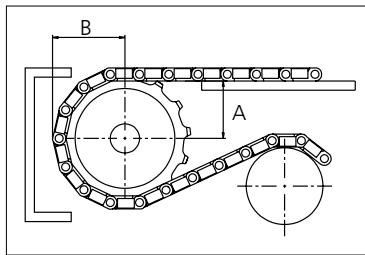
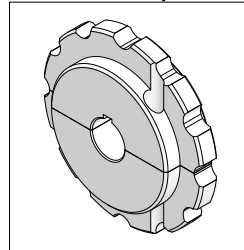
Molded two-part



Machined solid



Machined two-part



Please ensure that sufficient size shaft and keyway are chosen for corresponding load.

Other sprocket sizes are available upon request

Width of tooth: 15.8 mm (0.62 in)

Width of Machined Sprocket 42.0 mm (1.65 in)

Width of Moulded Sprocket 58.5 mm (2.30 in)

uni Retainer Rings: See uni Retainer Ring data sheet:

<https://app.eptool.online/downloads?query=retainer+ring>



The local partner of choice for sustainable conveyor belting solutions - around the globe.

<http://eptool.online>

This information is subject to alteration due to continuous development. Ammeraal Beltech will not be held liable for the incorrect use of the above stated information. This information replaces previous information. All activities performed and services rendered by Ammeraal Beltech are subject to general terms and conditions of sale and delivery, as applied by its operating companies.

Member of Ammega Group.



Scan the QR code and find your local contact

Ammeraal Beltech Modular
Hjulmagervej 21
DK-7100 Vejle
T +45 7572 3100

<http://eptool.online>