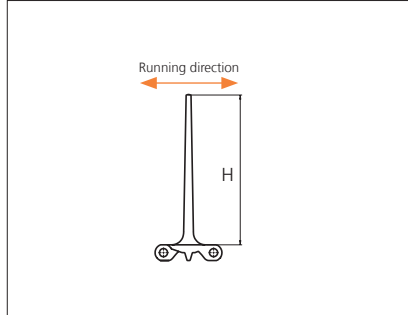
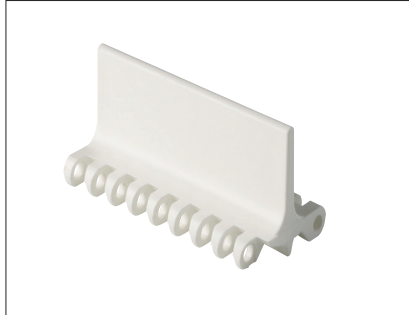




Plastic Modular Belt

Accessories **uni MPB** Type **Flights**

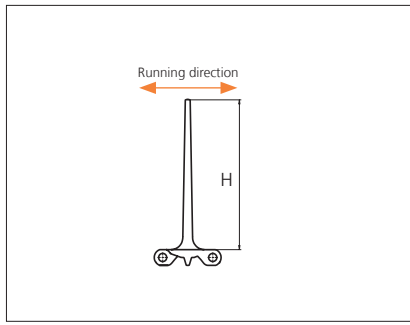
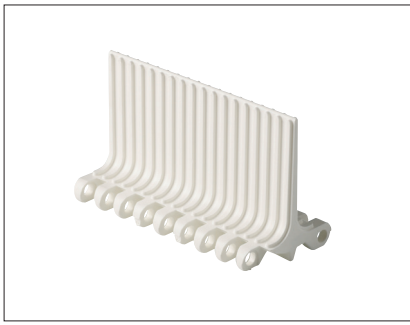


Type	Material & color	H		Link size	Width		Indent both sides	
		mm	in		mm	in	mm	in
Flat	PE-I	5.0	0.20	K600	151.0	5.94	3.0	0.12
	PP-I PE-I	10.0	0.39					
	POM-D PP-I PE-I	25.4	1.00				0.0	0.0
		50.8	2.00					
		76.2	3.00					
		101.6	4.00					
		101.6	4.00					
	152.4	6.00	34.0*				1.34	
			0.0	0.00				

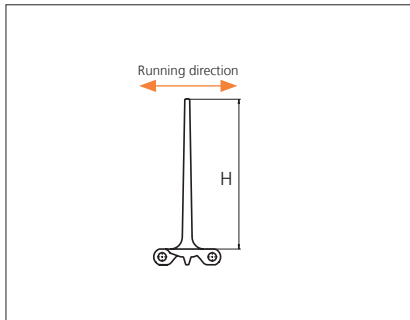
*Indent only in one side.

Depending on height and spacing the use of product supports may influence the backflex radius.

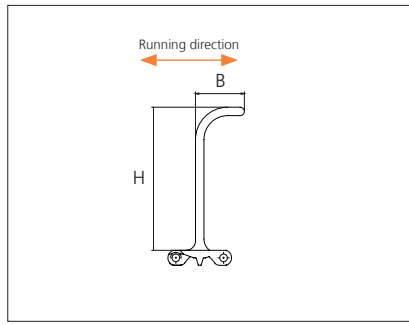
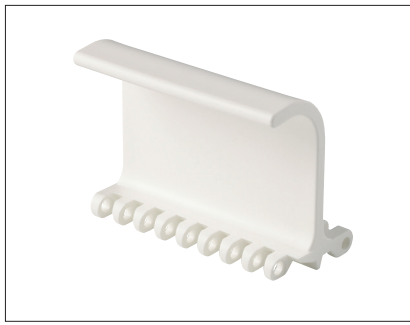
STANDARD
STRAIGHT RUNNING
PITCH 50.8 MM/2.00 IN



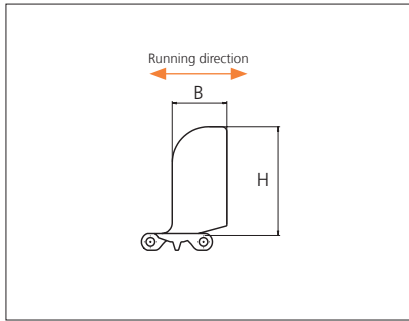
Type	Material & color	H		Link size	Width		Indent both sides	
		mm	in		mm	in	mm	in
Non Stick	PP-I <input type="checkbox"/> W <input checked="" type="checkbox"/> B	76.2	3.00	K600	151.0	5.94	0.0	0.00
	PE-I <input checked="" type="checkbox"/> B <input checked="" type="checkbox"/> N	101.6	4.00					



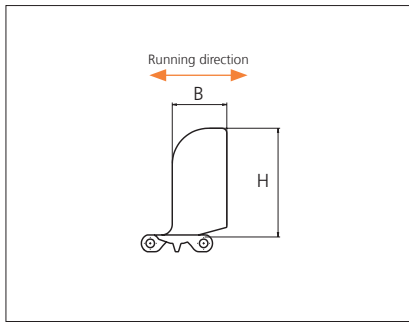
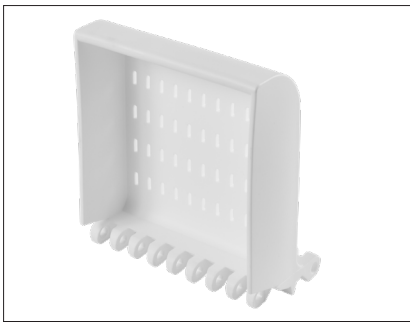
Type	Material & color	H		Link size	Width		Indent both sides	
		mm	in		mm	in	mm	in
10% Non Stick	PP-I <input type="checkbox"/> W <input checked="" type="checkbox"/> B	50.8	2.00	K600	151.0	5.94	0.0	0.00
	PE-I <input checked="" type="checkbox"/> B <input checked="" type="checkbox"/> N	76.2	3.00					
		101.6	4.00					



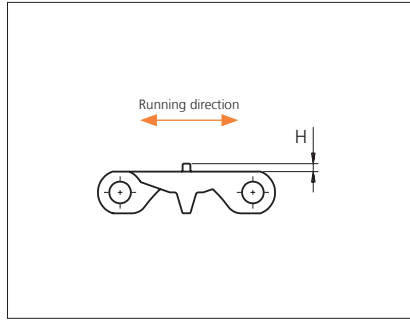
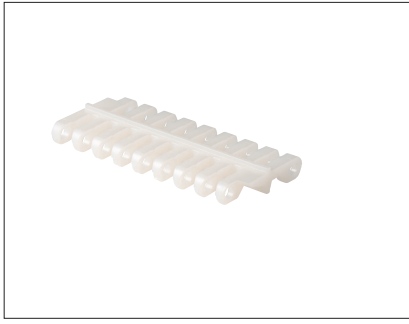
Type	Material & color	H		B		Link size	Width		Indent both sides	
		mm	in	mm	in		mm	in	mm	in
Bent	PP-I W B	76.2	3.00	52.0	2.05	K600	151.0	5.94	0.0	0.00
	PP-I W B	101.6	4.00							
	PE N									
	PP-I W B	152.4	6.00							



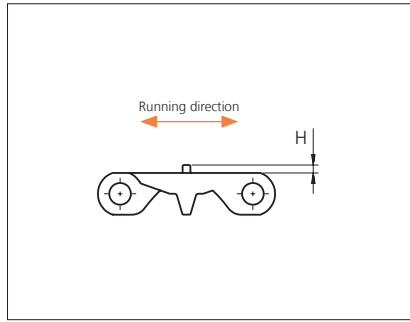
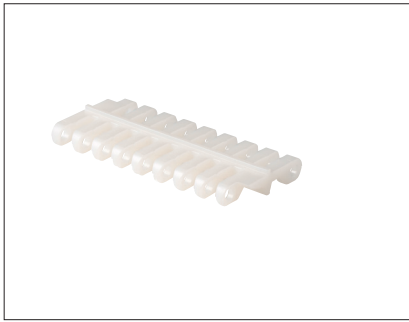
Type	Material & color	H		B		Link size	Width		Indent both sides	
		mm	in	mm	in		mm	in	mm	in
Cupped	PP-I W	76.2	3.00	52.0	2.05	K600	151.0	5.94	0.0	0.00
		101.6	4.00							
		152.4	6.00							



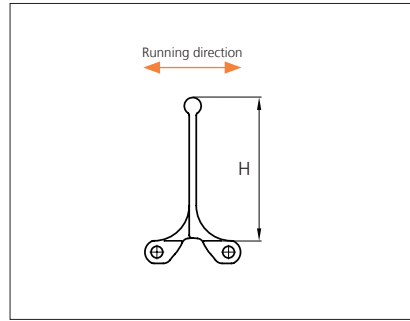
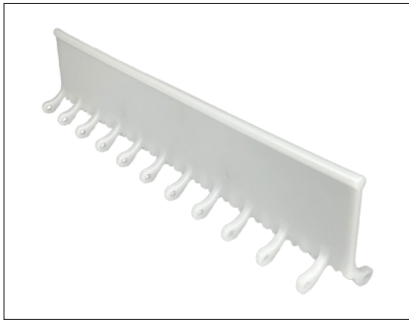
Type	Material & color	H		B		Link size	Width		Indent both sides	
		mm	in	mm	in		mm	in	mm	in
Cupped drain	PP-I W	76.2	3.00	52.0	2.05	K600	151.0	5.94	0.0	0.00
		101.6	4.00							
		152.4	6.00							



Type	Material & color	H		Link size	Width		Indent both sides	
		mm	in		mm	in	mm	in
Flat 20%	PE-I	5.0	0.20	K600	151.0	5.94	3.0	0.12



Type	Material & color	H		Link size	Width		Indent both sides	
		mm	in		mm	in	mm	in
Flat 22%	PE-I	3.0	0.12	K600	151.0	5.94	3.0	0.12



Type	Material & color		H		Link size	Width		Indent both sides			
			mm	in		mm	in	mm	in		
Flat Round Bar	PE-I		PP-I		101.6	4.00	K1520*	385.9	15.19	0.0	0.00
							K2120**	537.1	21.15		

*Designed to fit K1800 belt with 34.0 mm (1.34 in) indents.
 **Designed to fit K2400 belt with 34.0 mm (1.34 in) indents.

Note: Possible indents in steps of 16.9 mm (0.68 in).
 Note: By using this flight the belt loses 33% of its permissible tensile force.



The local partner of choice for sustainable conveyor belting solutions – around the globe.
<http://eptool.online>

Member of Ammega Group.



Scan the QR code and find your local contact

Ammeraal Beltech Modular
 Hjulmagervej 21
 DK-7100 Vejle
 T +45 7572 3100

<http://eptool.online>

This information is subject to alteration due to continuous development. Ammeraal Beltech will not be held liable for the incorrect use of the above stated information. This information replaces previous information. All activities performed and services rendered by Ammeraal Beltech are subject to general terms and conditions of sale and delivery, as applied by its operating companies.